

CLASSIFIED



Classified Powershift Hub
now integrated with
SHIMANO Di2 Groupsets
via wireless communication



Powershift
by **CLASSIFIED**

Di2
DIGITAL INTEGRATED INTELLIGENCE



Classified Cycling joins SHIMANO
CONNECTED PARTNERS program.



Classified x SHIMANO

A Key Milestone for Classified

Classified announces integration between its **Powershift Hub** technology and **SHIMANO Di2** electronic groupsets, marking a key milestone in drivetrain compatibility.

This integration is the result of a cooperation between Classified and SHIMANO. As part of the **SHIMANO CONNECTED PARTNERS** program, Classified has enabled seamless integration with SHIMANO electronic drivetrains — a key step in our mission to deliver rider-focused performance solutions through open innovation.



Classified x SHIMANO

SHIMANO's Precision and Classified's Innovation

This new compatibility allows riders to control the Classified Powershift Hub directly from SHIMANO Di2, **eliminating the need for a separate button.**

Di2 users can now shift the internal two-speed Powershift Hub **using their existing SHIMANO shift levers**—enabling a seamless, intuitive set-up.

As of now, all existing and future users of Classified's Powershift Hub can directly connect with all SHIMANO Di2 groupsets through the **Classified app**. The update is free-of-charge and requires no additional hardware.



Powershift
by **CLASSIFIED**

Di2
DIGITAL INTEGRATED INTELLIGENCE



Classified Cycling joins SHIMANO
CONNECTED PARTNERS program.



Classified x SHIMANO

Key Functions and Benefits

1x simplicity, 2x functionality - Riders can enjoy the benefits of a 2x system whilst retaining the chainline efficiency, and durability of a 1x set-up

Fast, reliable shifting under full load: Instant Powershift functionality under full load, activated through Di2 shifters

Simplified set-up - No additional buttons, remotes or accessories required

Cross-Platform connectivity - Riders can connect their SHIMANO groupset to the Classified app, and adjust personal preferences on the E-TUBE PROJECT Cyclist app.



Powershift
by **CLASSIFIED**

Di2
DIGITAL INTEGRATED INTELLIGENCE



Classified Cycling joins SHIMANO
CONNECTED PARTNERS program.



CLASSIFIED



Classified Mobile App SHIMANO D-FLY Integration



Classified Mobile App

Integration Details and Specs

What's the feature: High-Low gear change through the Classified Powershift Hub communicating within the Di2 system - D-Fly channels 3 and 4

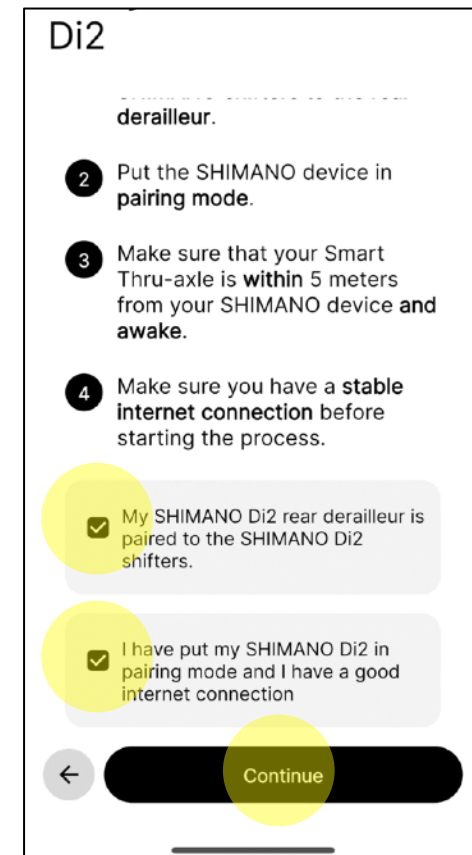
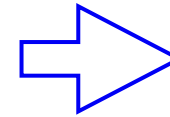
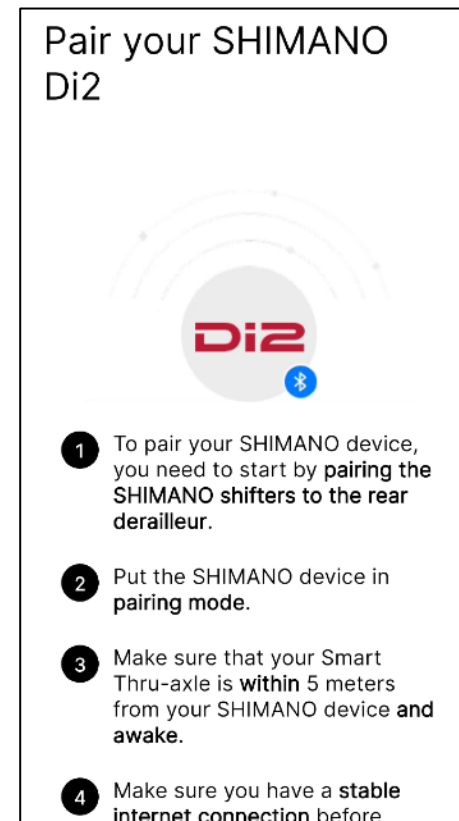
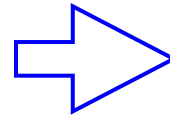
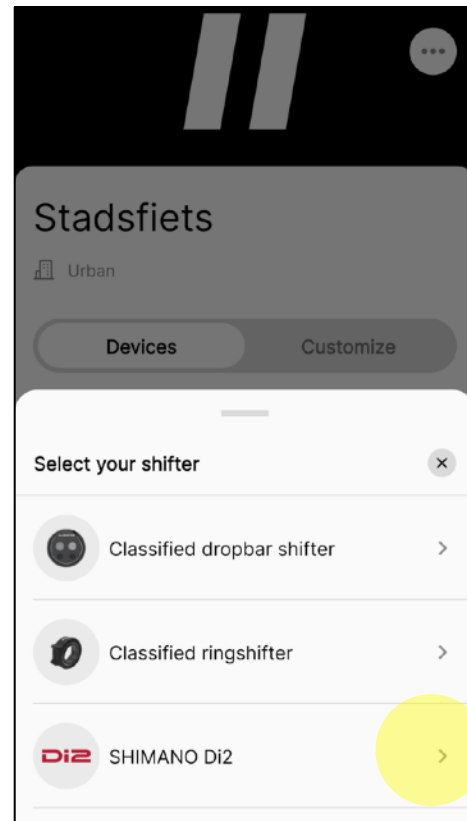
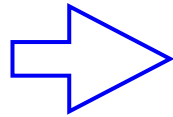
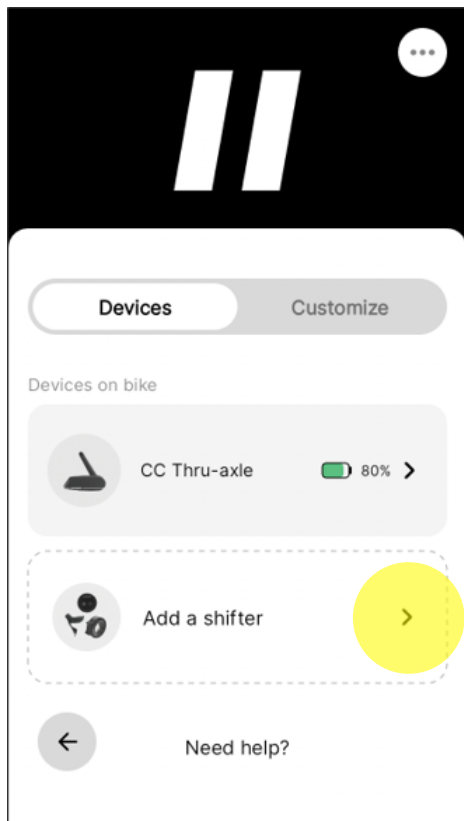
What's the procedure: The procedure is detailed at the following slides

What are the integration costs: No additional costs for users

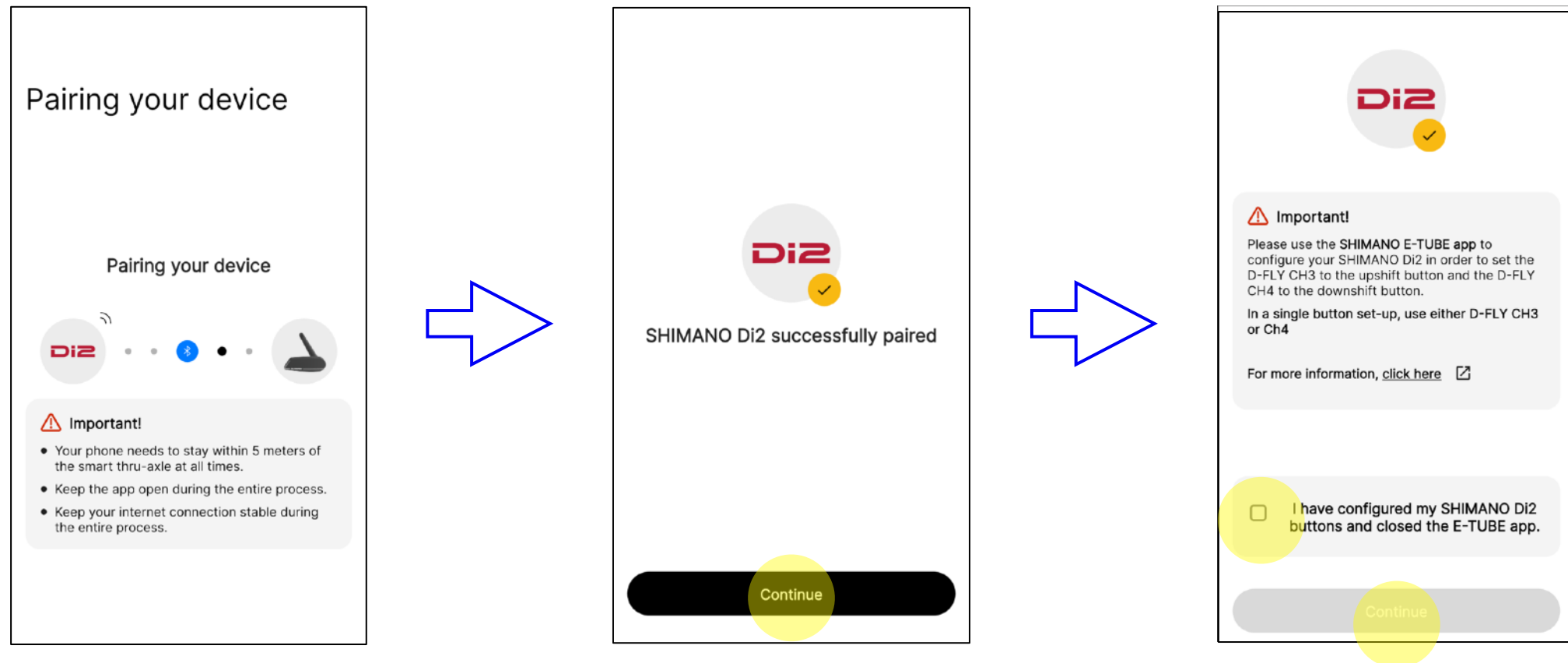


Pairing your SHIMANO Di2

Before starting the pairing process, please make sure that your smartphone is paired with the Classified Smart Thru-Axle, and that the Classified App is installed with the latest update.



Pairing your SHIMANO Di2



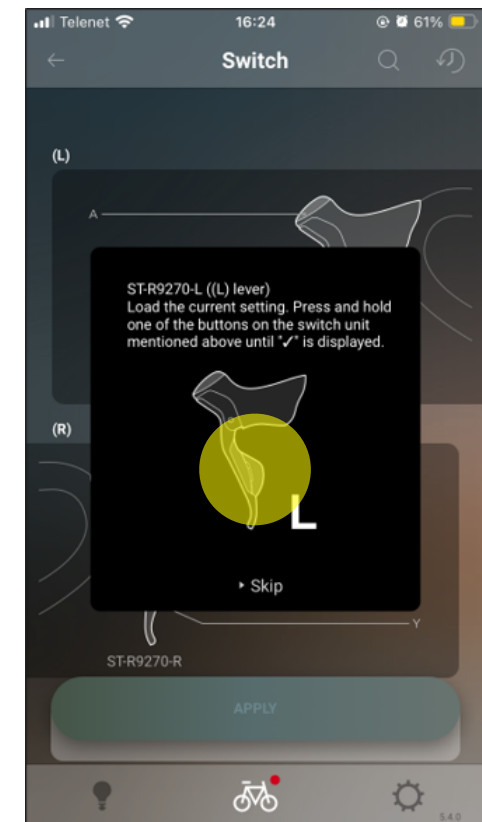
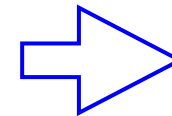
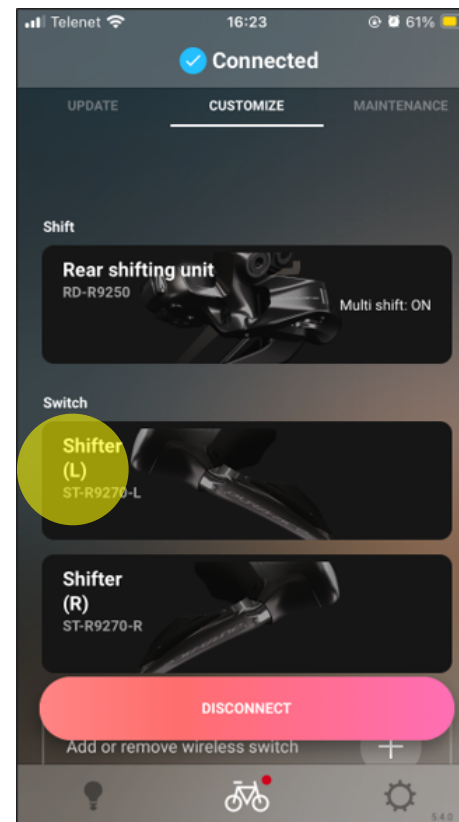
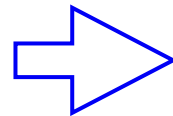
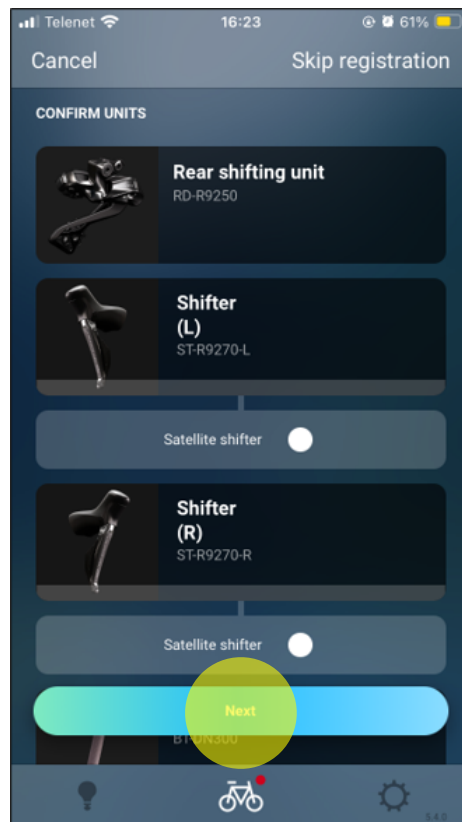
CLASSIFIED



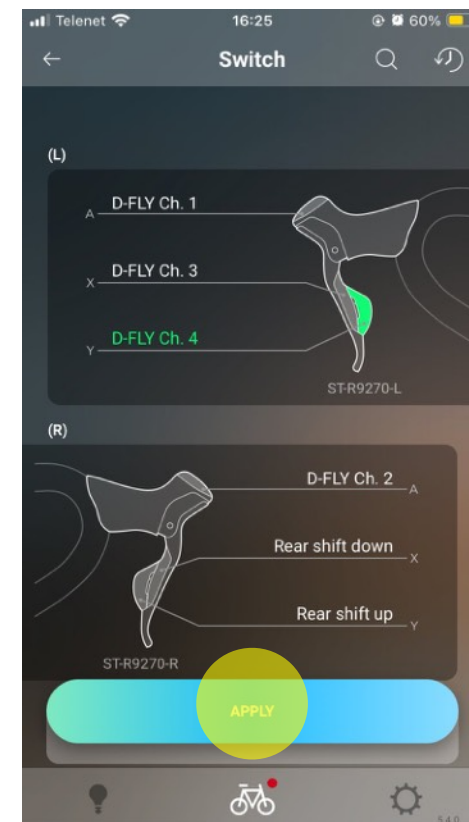
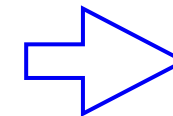
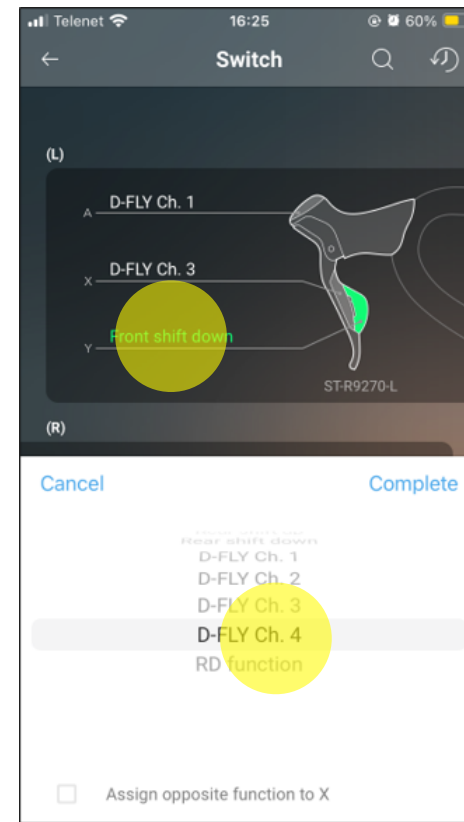
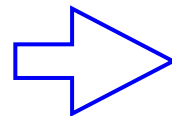
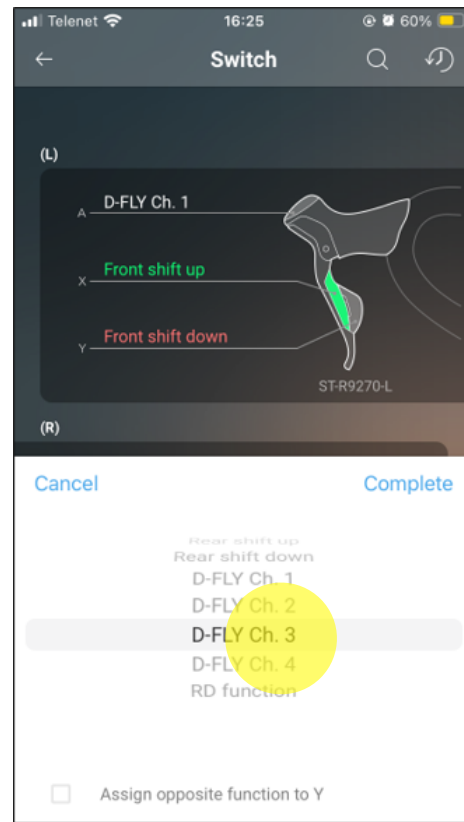
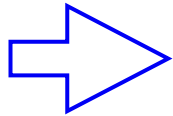
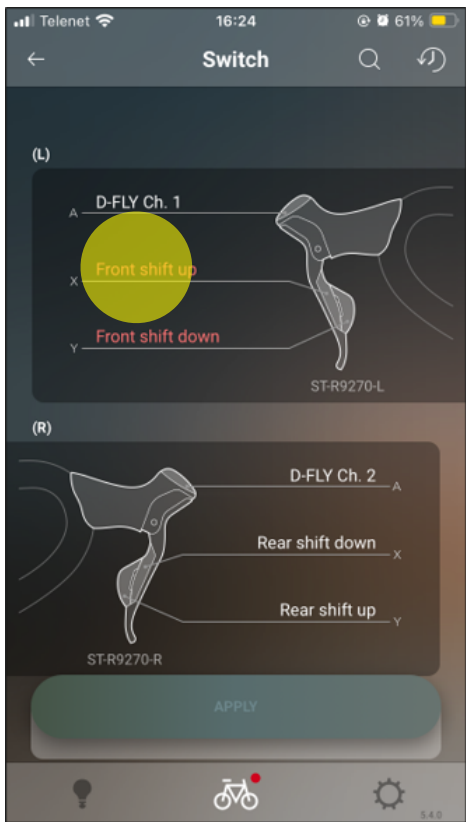
SHIMANO Mobile App E-TUBE PROJECT Cyclist App Settings Change



Change Shifter Channels



Change Shifter Channels



CLASSIFIED



Thank you.

